

KITAGAWA POWER CHUCKS

MODELS B, BT, B200, BT200, HOH, HOB, N, NL

1.5MM x 60° SERRATED

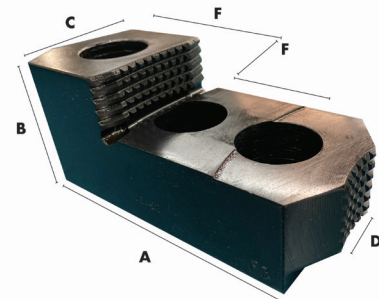
SOFT JAWS - STANDARD HEIGHT

CRITICAL

EXTRA HEIGHT

chuck size	part number	A	B	C	D	F	SCREW SIZE	G	PART NUMBER	B
5	D5SSH	2.38	1.50	1.00	0.393	0.748	8mm	0.50	not standard	
5	SB0SC1*	2.24	1.22	0.91	0.393	0.749	8mm	0.39	SB05C1053	2.09
6	D6SSH38	2.88	1.50	1.25	0.473	0.79	10mm	0.62	D6SEH38	3.00
8	D8SSH1	4.00	2.00	1.50	0.551	0.984	12mm	1.00	DSSEH1	4.00
10	D10SSH	4.63	2.00	1.50	0.63	1.187	12mm	1.00	D10SEH	4.00
12	D11SSH2	5.00	2.00	2.00	0.71	1.187	14mm	0.75	D11SEH2	4.00
12	D212SSH	5.50	2.50	2.00	0.827	1.187	16mm	1.00	D212SEH	4.00
15	D15SSH1	6.25	3.00	2.50	0.866	1.687	20mm	1.00	D15SEH1	4.00
15	D215SSH	6.25	3.00	2.50	1.004	1.687	20mm	1.00	not standard	
15	D15SEH1B6	6.25	6.00	2.50	0.866	1.687	20mm	1.00	D15SEH1	4.00

*POINTED ONLY; FOR OTHER POINTED JAWS, ADD "OP" TO THE END OF THE SQUARE JAW PART NUMBER, I.E. D5SSHOP



HARD JAWS - SINGLE STEP

CRITICAL

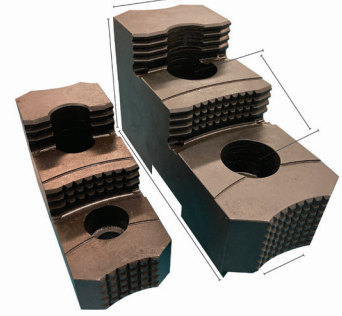
chuck size	part number	A	B	C	D	F	SCREW SIZE	step depth
5	HBOSB1	2.19	1.22	0.91	0.393	0.709	8mm	0.51
6	D6SSH38RJ	2.85	1.50	1.13	0.473	0.79	10mm	0.48
8	D8SSH1RJ	3.16	1.98	1.50	0.551	0.984	12mm	0.75
10	D10SSHRJ	3.99	1.98	1.50	0.63	1.187	12mm	0.76
12	D11SSH2RJ	4.16	1.98	2.00	0.71	1.187	14mm	0.83
15	D15SSHRJ	5.88	2.48	2.50	0.866	1.687	20mm	0.93
15	D215SSHRJ	5.88	2.48	2.50	1.004	1.687	20mm	0.93

*ALUMINUM JAWS AVAILABLE

KITAGAWA POWER CHUCKS

MODELS B, BT, B200, BT200, HOH, HOB, N, NL

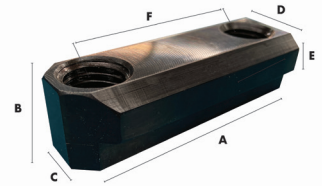
1.5MM x 60° SERRATED



HARD JAWS - DOUBLE STEP

CRITICAL

chuck size	part number	A	B	C	D	F	SCREW SIZE	1st step depth	2nd step depth
6	D6SSH38RJ2S	2.85	1.73	1.13	0.473	0.79	10mm	0.42	0.86
8	D8SSH1RJ2S	3.17	2.23	1.50	0.551	0.984	12mm	0.63	1.25
10	D10SSHRJ2S	3.99	2.73	1.50	0.63	1.187	12mm	0.75	1.50
12	D11SSH2RJ2S	4.16	2.48	2.00	0.71	1.187	14mm	0.68	1.36
12	D212SSHRJ2S	4.13	2.75	2.00	0.827	1.187	16mm	0.75	0.75
15	D15SSHRJ2S	5.88	2.98	2.50	0.866	1.687	20mm	0.75	1.54
15	D215SSHRJ2S	5.88	2.98	2.50	1.004	1.687	20mm	0.75	1.54



T-NUTS

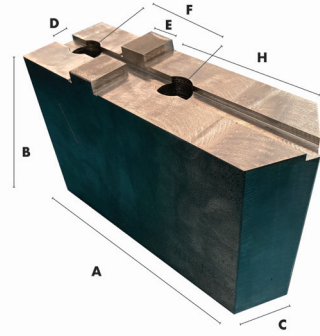
CRITICAL

chuck size	part number	A	B	C	D	E	F	SCREW SIZE
5	TNS1100	1.18	0.61	0.55	0.394	0.217	0.709	8mm
6	DSH6.538M	1.44	0.87	0.69	0.472	0.295	0.79	10mm
8	DSHS-1	1.87	1.00	0.80	0.551	0.335	0.984	1 / 2-13
8	DSH8-1M	1.87	1.00	0.80	0.551	0.335	0.984	12mm
8	DSH208M	1.83	0.81	0.81	0.551	0.335	0.984	12mm
8	DSH81M	2.00	1.00	0.984	0.628	0.375	0.984	12mm
10	DSH10	2.05	1.00	0.87	0.629	0.335	1.187	1 / 2-13
10	DSH10M	2.05	1.00	0.87	0.629	0.335	1.187	12mm
10	DSH210M	2.01	0.85	0.89	0.629	0.335	1.181	12mm
10	DSH210	2.00	0.85	0.88	0.629	0.335	1.181	1 / 2-13
12	DSH12M	2.25	1.30	1.04	0.709	0.53	1.187	14mm
12	DTNS2204	2.19	1.09	1.16	0.827	0.45	1.181	16mm
15	DTNS1107	3.15	1.79	1.32	0.866	0.65	1.693	20mm
15	DSH153	3.15	1.50	1.33	0.863	0.750	1.960	3 / 4-10

ASSORTED MANUAL CHUCKS

MODELS BERGMAN, BISON, BUCK, CUSHMAN, PRATT BURNERD,
ROHM, SCA, S-P, WARNER SWASEY, & YUASA

AMERICAN STANDARD TONGUE & GROOVE



SOFT JAWS

CRITICAL

chuck size	part number	A	B	C	D	E	F	SCREW SIZE	H
6	6MSH	2.81	1.38	1.00	0.313	0.499	1.5	3/8	1.16
6	6MSHO	3.13	1.38	1.00	0.313	0.499	1.5	3/8	1.56
6	05201459*	3.19	1.63	1.25	0.313	0.499	1.5	3/8	1.69
8	8MSH	3.31	1.88	1.25	0.313	0.499	1.75	3/8	1.41
8	8MEH	3.31	3.38	1.25	0.313	0.499	1.75	3/8	1.41
8	8MSHO	3.31	1.88	1.25	0.313	0.499	1.75	3/8	1.69
8	8MEHO	3.31	3.38	1.25	0.313	0.499	1.75	3/8	1.69
8	05201450	3.50	1.63	1.25	0.313	0.499	1.75	3/8	1.63
8	05201462*	3.94	1.63	1.25	0.313	0.499	1.75	3/8	2.25
8	8HSHO	3.31	1.88	1.25	0.313	0.499	1.75	1/2	1.69
10	10MSH	3.94	1.88	1.5	0.501	0.749	2.125	1/2	1.59
10	10MEH	3.94	3.38	1.5	0.501	0.749	2.125	1/2	1.59
10	10MSHO	3.94	1.88	1.5	0.501	0.749	2.125	1/2	1.94
10	10MEHO	3.94	3.38	1.5	0.501	0.749	2.125	1/2	1.94
10	05201452	4.25	1.88	1.5	0.501	0.749	2.125	1/2	1.94
10	05201464*	4.81	1.88	1.5	0.501	0.749	2.125	1/2	2.69
10	10HSHO	3.94	1.88	1.75	0.501	0.749	2.125	5/8	1.94
10	05201453	4.25	2.38	1.75	0.501	0.749	2.125	5/8	1.94
10	05201465*	4.81	2.38	1.75	0.501	0.749	2.125	5/8	2.69
10	05201477	4.25	3.88	1.75	0.501	0.749	2.125	5/8	1.94

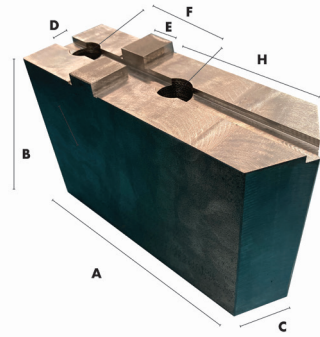
*FOR POINTED JAWS ADD "OP" TO THE END OF ANY PART NUMBER, I.E. 6MSHOP | *Pointed Style Jaw

***ALUMINUM JAWS AVAILABLE FROM STOCK**
***SEE NEXT PAGE FOR PIE JAWS™ & HARD JAWS**

ASSORTED MANUAL CHUCKS

MODELS BERGMAN, BISON, BUCK, CUSHMAN, PRATT BURNERD,
ROHM, SCA, S-P, WARNER SWASEY, & YUASA

AMERICAN STANDARD TONGUE & GROOVE



SOFT JAWS

CRITICAL

chuck size	part number	A	B	C	D	E	F	SCREW SIZE	H
12	12MSH	4.50	2.13	1.75	0.501	0.749	2.5	1/2	1.88
12	12MEH	4.50	3.38	1.75	0.501	0.749	2.5	1/2	1.88
12	12MSHO	4.75	2.13	1.75	0.501	0.749	2.5	1/2	2.50
12	12MEHO	4.75	3.38	1.75	0.501	0.749	2.5	1/2	2.50
12	05201454	4.88	2.38	1.75	0.501	0.749	2.5	1/2	2.31
12	05201466*	5.75	2.38	1.75	0.501	0.749	2.5	1/2	3.38
12	05201478	4.88	3.88	1.75	0.501	0.749	2.5	1/2	2.31
12	12HSH	4.50	2.13	2.00	0.501	0.749	2.5	5/8	1.88
12	12HSHO	4.75	2.13	2.00	0.501	0.749	2.5	5/8	2.50
12	05201455	4.88	2.38	2.00	0.501	0.749	2.5	5/8	2.31
12	05201467*	5.75	2.38	2.00	0.501	0.749	2.5	5/8	3.38
12	05201479	4.88	3.88	2.00	0.501	0.749	2.5	5/8	2.31
12	05201491*	5.75	3.88	2.00	0.501	0.749	2.5	5/8	3.38
15	15MSH	5.19	2.38	1.75	0.501	0.749	3	5/8	2.22
15	15MSHO	6.00	2.38	1.75	0.501	0.749	3	5/8	3.25
15	05201456	5.63	2.25	2.00	0.501	0.749	3	5/8	2.75
15	05201480	5.63	3.75	2.00	0.501	0.749	3	5/8	2.75
15	15HSH	5.19	2.38	2.50	0.501	0.749	3	3/4	2.22
15	15HSHO	6.00	2.38	2.50	0.501	0.749	3	3/4	3.25
15	M1610B1	5.75	3.25	2.00	0.501	0.749	3	3/4	2.00
18	18MSH	5.19	2.88	2.25	0.501	0.749	3	3/4	2.22
18	18MSHO	6.00	2.88	2.25	0.501	0.749	3	3/4	3.25
18	18HSHO	6.00	2.88	3.00	0.501	0.749	3	3/4	3.25
18	05201458	5.63	3.25	2.50	0.501	0.749	3	3/4	2.75
18	05201519*	7.25	3.25	2.50	0.501	0.749	3	3/4	4.50
18	05201520*	7.25	4.75	2.50	0.501	0.749	3	3/4	4.50

*FOR POINTED JAWS ADD "OP" TO THE END OF ANY PART NUMBER, I.E. 12MSHOP | *Pointed Style Jaw