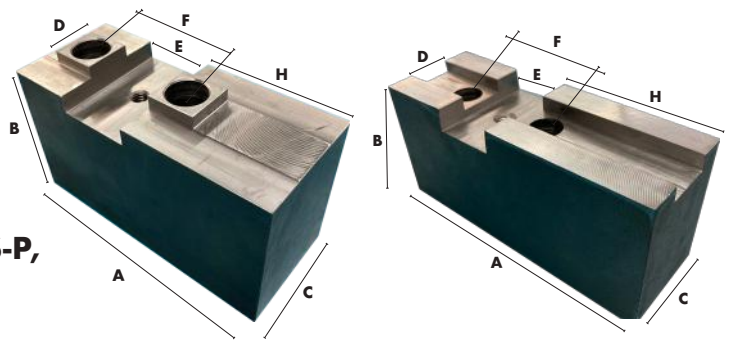


SQUARE SERRATED KEY TYPE
MODELS BUCK, GISHOLT, PRATT BURNERD, S-P,
WARNER & SWASEY

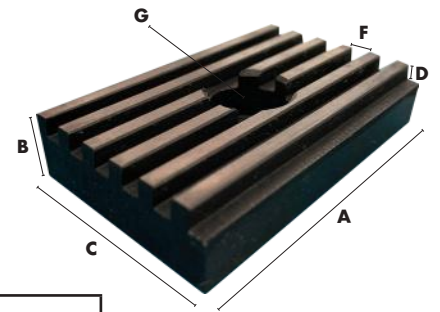


CRITICAL

| chuck size | part number | A | B | C | D | E | F | SCREW SIZE | H |
|------------|----------------|------|------|------|-------|-------|-------|------------|------|
| 6 | 6S | 3.00 | 1.50 | 1.25 | 0.738 | 0.377 | 1.687 | 5/16 | 1.50 |
| 7.5 | 7.5S | 4.00 | 2.00 | 1.50 | 0.866 | 0.377 | 1.687 | 5/16 | 1.50 |
| 8 | D8LS | 3.75 | 2.00 | 1.50 | 0.669 | 0.601 | 1.25 | 1/2 | 1.91 |
| 12 | 12KSSH | 5.00 | 2.25 | 1.75 | 0.751 | 0.996 | 1.75 | 1/2 | 2.63 |
| 12 | 12KSEH | 5.00 | 3.50 | 1.75 | 0.751 | 0.996 | 1.75 | 1/2 | 2.63 |
| 12 | D12AO | 4.38 | 2.50 | 1.75 | 0.751 | 0.996 | 1.75 | 1/2 | 2.63 |
| 12 | D12AO58 | 4.56 | 2.50 | 1.75 | 0.751 | 0.996 | 1.75 | 5/8 | 2.63 |
| 15 | M2315B1 | 5.00 | 3.00 | 2.25 | 1.001 | 1.488 | 2.5 | 3/4 | 1.69 |
| 15 | M2315B2 | 5.00 | 5.00 | 2.25 | 1.001 | 1.488 | 2.5 | 3/4 | 1.69 |
| 15 | 15KSSH | 6.00 | 2.50 | 2.25 | 1.001 | 1.488 | 2.5 | 3/4 | 3.00 |
| 15 | 15KSEH | 6.00 | 3.50 | 2.25 | 1.001 | 1.488 | 2.5 | 3/4 | 3.00 |
| 18 | 18KSSH | 6.00 | 3.00 | 2.50 | 1.001 | 1.488 | 2.5 | 3/4 | 3.00 |
| 18 | 18KSEH | 6.00 | 4.00 | 2.50 | 1.001 | 1.488 | 2.5 | 3/4 | 3.00 |
| 21 | M2320B1 | 6.25 | 3.00 | 2.50 | 1.001 | 1.488 | 3 | 3/4 | 3.19 |
| 21 | M2320B2 | 6.25 | 5.00 | 2.50 | 1.001 | 1.488 | 3 | 3/4 | 3.19 |

FOR POINTED JAWS ADD "OP" TO THE END OF ANY PART NUMBER, I.E. 12KSSHOP.

*** ALUMINUM JAWS AVAILABLE!!**

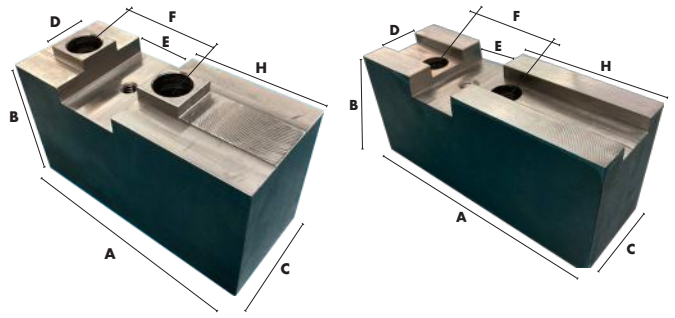


SQUARE SERRATED MASTER KEYS

CRITICAL

| chuck size | part number | A | B | C | D | E | F | G |
|------------|---------------|------|------|-------|------|-------|------|------|
| 10-12 | D12SQK | 1.69 | 0.50 | 0.993 | 0.13 | 0.127 | 0.25 | 5/16 |
| 15-18 | D18SQK | 2.25 | 0.50 | 1.487 | 0.13 | 0.127 | 0.25 | 3/8 |
| 21-24 | D21SQK | 2.50 | 0.50 | 1.487 | 0.13 | 0.127 | 0.25 | 3/8 |

ASSORTED POWER CHUCKS
MODELS AUTOBLOK, CUSHMAN, LOGAN-SPORT,
PRATT BURNERD, HOWA (HO7MC)
ACME SERRATED KEY TYPE



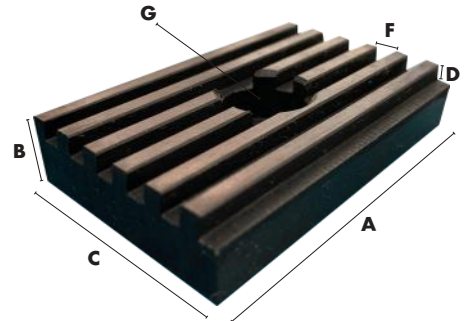
SOFT JAWS

CRITICAL

| chuck size | part number | A | B | C | D | E | F | SCREW SIZE | H |
|------------|------------------|------|------|------|-------|-------|------|------------|------|
| 10 | 2513072 | 4.13 | 2.31 | 1.75 | 0.749 | 1.031 | 1.75 | 1/2 | 1.81 |
| 10 | 2513072EH | 4.13 | 3.81 | 1.75 | 0.749 | 1.031 | 1.75 | 1/2 | 1.81 |
| 10 | 2513072EL | 4.88 | 2.31 | 1.75 | 0.749 | 1.031 | 1.75 | 1/2 | 2.56 |
| 12 | 2513071 | 5.00 | 2.31 | 1.75 | 0.874 | 1.031 | 2 | 5/8 | 2.69 |
| 12 | 2513071EH | 5.00 | 3.81 | 1.75 | 0.874 | 1.031 | 2 | 5/8 | 2.69 |
| 15-18 | 2513070 | 6.00 | 3.25 | 2.50 | 1 | 1.531 | 2.5 | 3/4 | 3.00 |
| 15-18 | 15AO4S1 | 6.50 | 4.00 | 2.50 | 1 | 1.531 | 2.5 | 3/4 | 4.22 |
| 15-18 | 2513070EL | 6.50 | 3.25 | 2.50 | 1 | 1.531 | 2.5 | 3/4 | 3.50 |
| 21-24 | 2513069 | 5.88 | 3.25 | 2.50 | 1.249 | 1.531 | 3 | 7/8 | 2.75 |
| 21-24 | 2513069EL | 6.75 | 3.25 | 2.50 | 1.249 | 1.531 | 3 | 7/8 | 3.63 |
| 21-24 | 2513069EW | 5.88 | 3.25 | 3.00 | 1.249 | 1.531 | 3 | 7/8 | 2.75 |

FOR POINTED JAWS ADD "OP" TO THE END OF ANY PART NUMBER, I.E. 2513071P

*** ALUMINUM JAWS AVAILABLE!!**

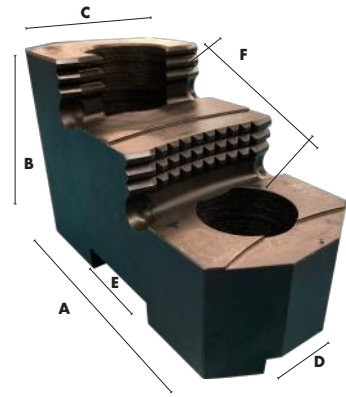


ACME SERRATED MASTER KEYS

CRITICAL

| chuck size | part number | A | B | C | D | F | G |
|------------|------------------|------|-----|------|------|------|------|
| 10-12 | DT10912 | 1.69 | 0.5 | 1.03 | 0.13 | 0.25 | 5/16 |
| 15-18 | DT11199 | 2.44 | 0.5 | 1.53 | 0.13 | 0.25 | 3/8 |
| 21-24 | DT2508280 | 2.88 | 0.5 | 1.53 | 0.13 | 0.25 | 3/8 |

ASSORTED POWER CHUCKS
MODELS BUCK, GISHOLT, PRATT BURNERD, S-P,
WARNER & SWASEY
SQUARE SERRATED KEY TYPE



REVERSIBLE HARD JAWS

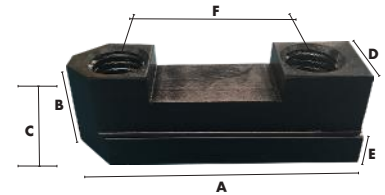
CRITICAL

| chuck size | part number | A | B | C | D | E | F | SCREW SIZE | 1st step depth | 2nd step depth |
|------------|----------------|------|------|------|-------|-------|------|------------|----------------|----------------|
| 12 | D12AR | 3.78 | 2.50 | 1.75 | 0.751 | 0.996 | 1.75 | 1/2 | 0.63 | 1.25 |
| 12 | D12AR58 | 3.78 | 2.50 | 1.75 | 0.751 | 0.996 | 1.75 | 5/8 | 0.63 | 1.25 |
| 18 | D18AR | 4.75 | 3.00 | 2.25 | 1.001 | 1.488 | 2.5 | 3/4 | 0.75 | 1.50 |

T NUTS

CRITICAL

| chuck size | part number | A | B | C | D | E | F | SCREW SIZE |
|------------|---------------|------|------|------|------|------|------|------------|
| 10-12 | SP1012 | 2.44 | 1.00 | 1.00 | 0.75 | 0.37 | 1.75 | 1/2-13 |
| 12CC | SP12CC | 2.50 | 1.00 | 1.00 | 0.75 | 0.37 | 1.75 | 5/8-11 |
| 15-18 | SP1518 | 3.75 | 1.25 | 1.25 | 1 | 0.43 | 2.5 | 3/4-10 |



ALUMINUM PIE JAWS™

STANDARD HEIGHT

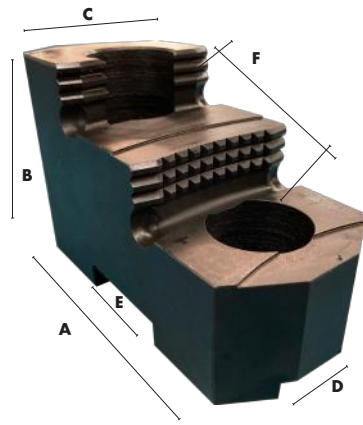
CRITICAL

EXTRA HEIGHT

| chuck size | part number | A | B | D | E | F | SCREW SIZE | part number | B |
|------------|-------------|-------|------|-------|-------|-------|------------|--------------|------|
| 6 | 6P | 6.00 | 2.00 | 0.738 | 0.377 | 1.687 | 5/16 | 6P1 | 4.00 |
| 7.5 | 7.5P | 8.00 | 2.00 | 0.866 | 0.377 | 1.687 | 5/16 | not standard | |
| 10 | 10P | 10.00 | 2.00 | 0.750 | 0.993 | 1.75 | 1/2 | 10P1 | 4.00 |
| 12 | 12P | 12.00 | 2.00 | 0.750 | 0.993 | 1.75 | 1/2 | 12P1 | 4.00 |
| 15 | 15P | 15.00 | 3.00 | 1.000 | 1.487 | 2.5 | 3/4 | 15P1 | 4.00 |

FOR CAST IRON ADD "CI" TO THE BEGINNING OF THE ALUMINUM PART NUMBER, I.E. CI6AP. OTHER SIZES AVAILABLE FROM STOCK.

ASSORTED POWER CHUCKS
MODELS AUTOBLOK, CUSHMAN, LOGANSPORT,
PRATT BURNERD, HOWA (HO7MC)
ACME SERRATED KEY TYPE



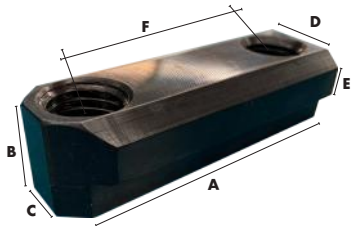
REVERSIBLE HARD JAWS

CRITICAL

| chuck size | part number | A | B | C | D | E | F | SCREW SIZE | 1st step depth | 2nd step depth |
|------------|---------------|------|------|------|-------|-------|------|------------|----------------|----------------|
| 10 | DT10RJ | 4.15 | 2.50 | 1.75 | 0.749 | 1.031 | 1.75 | 1/2 | 0.62 | 1.25 |
| 12 | DT12RJ | 5.21 | 2.50 | 1.75 | 0.874 | 1.031 | 2 | 5/8 | 0.51 | 1.13 |
| 15 | DT15RJ | 6.03 | 3.50 | 2.50 | 1 | 1.531 | 2.5 | 3/4 | 0.81 | 1.60 |

T NUTS

CRITICAL



| chuck size | part number | A | B | C | D | E | F | SCREW SIZE |
|------------|----------------|------|------|------|-------|-------|------|------------|
| 10 | DNC10 | 2.50 | 0.64 | 0.94 | 0.678 | 0.381 | 1.75 | 1/2-13 |
| 12 | DNC12 | 3.00 | 0.76 | 1.06 | 0.802 | 0.44 | 2 | 5/8-11 |
| 15-18 | DNC1518 | 3.50 | 0.93 | 1.25 | 0.933 | 0.55 | 2.5 | 3/4-10 |

ALUMINUM PIE JAWS™

STANDARD HEIGHT

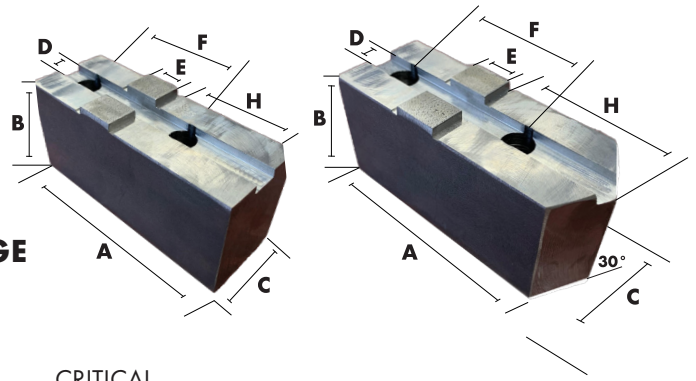
CRITICAL

EXTRA HEIGHT

| chuck size | part number | A | B | D | E | F | SCREW SIZE | part number | B |
|------------|------------------|-------|------|-------|-------|------|------------|-------------|------|
| 10 | 10AO4P | 10.00 | 2.00 | 0.749 | 1.031 | 1.75 | 1/2 | 10AO4P1 | 4.00 |
| 12 | 12A4P | 12.00 | 2.00 | 0.874 | 1.031 | 2 | 5/8 | 12AO4P1 | 4.00 |
| 15-18 | 15AO4P | 15.00 | 3.00 | 1 | 1.531 | 2.5 | 3/4 | 15AO4P1 | 4.00 |
| 21-24 | 2124A54P1 | 21.00 | 4.00 | 1.249 | 1.531 | 3 | 7/8 | 2124A54P5 | 5.00 |

FOR CAST IRON ADD "CI" TO THE BEGINNING OF THE ALUMINUM PART NUMBER, I.E. C110AO4P. OTHER SIZES AVAILABLE FROM STOCK

ASSORTED POWER CHUCKS MODELS FORKARDT, SMW KNCS QUICK CHANGE METRIC TONGUE & GROOVE



SOFT JAWS

CRITICAL

| chuck size (inches) | chuck size (mm) | part number | A | B | C | D | E | F | SCREW SIZE | H |
|---------------------|-----------------|-----------------------|------|------|------|-------|-------|---------|------------|-------|
| 6-7 | 160-175 | DIN6 | 3.31 | 1.38 | 1.00 | 0.315 | 0.708 | 1.26 | 8mm | 1.63 |
| 8 | 200 | DIN8 | 4.25 | 1.63 | 1.13 | 0.394 | 0.787 | 1.575 | 8mm | 1.97 |
| 10-12.5 | 250-315 | DIN10 | 4.75 | 2.06 | 1.50 | 0.472 | 0.787 | 1.575 | 12mm | 2.75 |
| 16 | 400 | DIN12 | 5.75 | 2.56 | 1.50 | 0.472 | 1.023 | 2.126 | 12mm | 2.94 |
| 40-100 | 1000-2500 | DSMWIRC1000-3H | 11.0 | 6.0 | 4.5 | 1.185 | .748 | 3.00 X2 | 24mm | 4.627 |

FOR POINTED JAWS, ADD "OP" TO THE END OF THE SQUARE JAW PART NUMBER, I.E. DIN6OP.

ALUMINUM PIE JAWS

STANDARD HEIGHT

CRITICAL

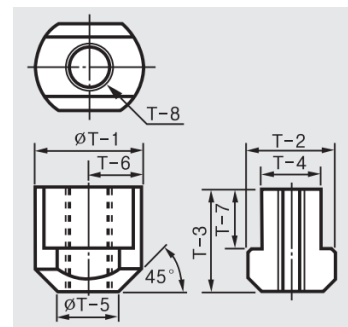
EXTRA HEIGHT

| chuck size (inches) | chuck size (mm) | part number | A | B | D | E | F | SCREW SIZE | part number | B |
|---------------------|-----------------|-------------------|-------|------|-------|-------|-------|------------|--------------------|------|
| 6-7 | 160-175 | MTG6MDP | 6.00 | 2.00 | 0.315 | 0.708 | 1.26 | 8mm | MTG6MDP1 | 4.00 |
| 8 | 200 | MTG8MDP | 8.00 | 2.00 | 0.394 | 0.787 | 1.575 | 8mm | MTG8MDP1 | 4.00 |
| 10 | 250 | MTG10MDP | 10.00 | 2.00 | 0.472 | 0.787 | 1.575 | 12mm | MTG10MDP1 | 4.00 |
| 12 | 315 | MTG12MDP | 12.00 | 2.00 | 0.472 | 0.787 | 1.575 | 12mm | MTG12MDP1 | 4.00 |
| 16 | 400 | MTG1516MDP | 15.00 | 3.00 | 0.472 | 1.023 | 2.126 | 12mm | MTG1516MDP1 | 4.00 |

FOR CAST IRON ADD "CI" TO THE BEGINNING OF THE ALUMINUM PART NUMBER, I.E. CIM6MDP.

T-NUT

| part number | T1 | T2 | T3 | T4 | T5 | T6 | T7 | T8 |
|----------------------|----|------|----|----|------|----|----|-----|
| DTNX-HC-21/24 | 46 | 37.5 | 45 | 25 | 26.5 | 23 | 26 | M20 |



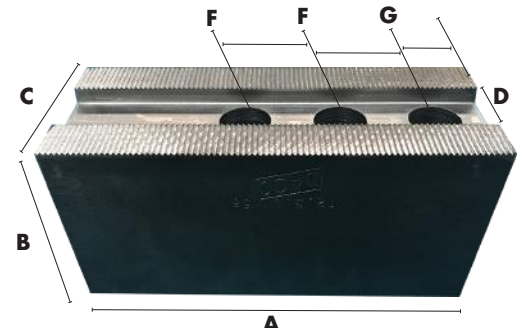
- * **ALUMINUM JAWS AVAILABLE FROM STOCK!**
- * **HARD JAWS, T-NUTS AND EXTRA HEIGHT SOFT JAWS SPECIALLY QUOTED!**



ASSORTED POWER CHUCKS

MODELS AUTOBLOK, ERICKSON, FORKARDT, GAMET, POWERHOLD, PRATT BURNERD, ROHM, & HOWA (HO12M-self Contained Air)

1/16" x 90° SERRATED



SOFT JAWS - STANDARD HEIGHT

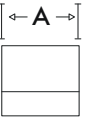
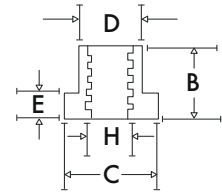
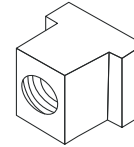
CRITICAL

EXTRA HEIGHT

| chuck size | part number | A | B | C | D | F | SCREW SIZE | G | part number | B |
|------------|---------------|------|------|------|-------|-------|------------|------|-------------|------|
| 6 | D6PSH | 3.00 | 1.50 | 1.13 | 0.433 | 0.718 | 5/16 | 0.44 | PH6S2 | 3.00 |
| 8-10 | D10PSH | 4.25 | 2.00 | 1.25 | 0.551 | 0.875 | 3/8 | 0.56 | PH10S1 | 3.00 |
| 10HD | D11PSH | 4.50 | 2.00 | 1.75 | 0.788 | 1.187 | 1/2 | 0.62 | D11PEH | 4.00 |
| 12 | D12PSH | 5.13 | 2.50 | 1.75 | 0.788 | 1.187 | 1/2 | 0.62 | PH12S2 | 4.00 |
| 14-22 | D15PSH | 6.50 | 2.50 | 1.75 | 0.827 | 1.562 | 5/8 | 0.75 | D15PEH | 4.00 |

FOR POINTED JAWS ADD "OP" TO THE END THE SQUARE JAW PART NUMBER, I.E. D6PSHOP.

FOR: ERICSON, GAMET, POWER HOLD WARNER SWASKEY-NIKKO CHUCKS (2 "T" NUTS PER JAW NORMALLY REQUIRED)



| chuck size | ORDER BY # | A | B | C | D | E | SCREW SIZE |
|-------------|-----------------|-------|------|------|------|------|------------|
| 8"+10" | DTN-810 | 3/4 | .606 | .750 | .550 | .252 | 3/8-16 |
| 10"H.D.+12" | DTN-1112 | 1 | .850 | 1.00 | .787 | .325 | 1/2-13 |
| 15" | DTN-15 | 1-1/8 | 1.00 | 1.00 | .825 | .430 | 5/8-11 |

ALUMINUM PIE JAWS

STANDARD HEIGHT

CRITICAL

EXTRA HEIGHT

| chuck size | part number | A | B | D | F | SCREW SIZE | part number | B |
|------------|----------------|-------|------|-------|-------|------------|-----------------|------|
| 6 | PH6P | 6.00 | 2.00 | 0.433 | 0.718 | 5/16 | PH6P1 | 4.00 |
| 8 | PH8-10P | 8.00 | 2.00 | 0.551 | 0.875 | 3/8 | PH8-10P1 | 4.00 |
| 10 | PH10P | 10.00 | 2.00 | 0.551 | 0.875 | 3/8 | PH10P1 | 4.00 |
| 12 | PH12P | 12.00 | 2.00 | 0.788 | 1.187 | 1/2 | PH12P1 | 4.00 |
| 15 | PH15P | 15.00 | 3.00 | 0.827 | 1.562 | 5/8 | PH15P1 | 4.00 |

FOR CAST IRON STYLE, ADD "CI" TO THE BEGINNING OF THE ALUMINUM PART NUMBER, I.E. CIPH600AP.